

# BWN Data Modification Application Fact Sheet

## Introduction

This fact sheet and the video recording that accompany it cover the BWN Data Modification Application.

## Background

In support of the *Blue Water Navy Vietnam Veterans Act of 2019*, VBA partnered with National Archives and Records Administration (NARA) to scan deck logs for vessels potentially in the waters covered by this act.

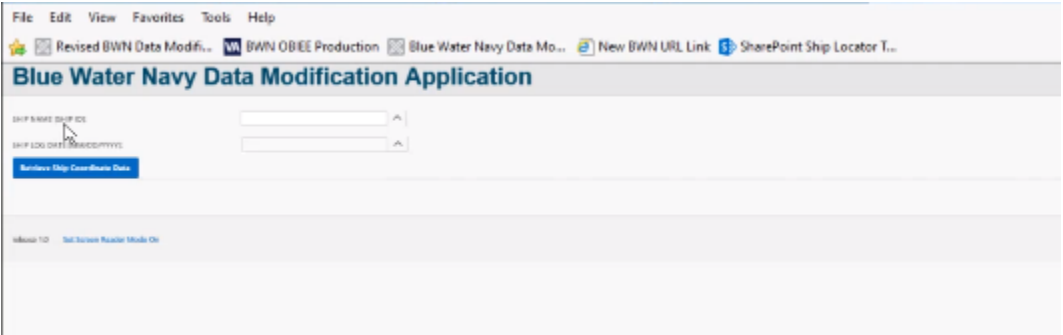
This information was uploaded into the Blue Water Navy Ship Locator Dashboard produced by Performance Analysis and Integrity and is a tool used for determining vessel location. Since the tool was released there have been instances where an error in a deck log coordinate has been identified and confirmed. In response to these instances, Performance Analysis & Integrity (PA&I) created the Blue Water Navy Data Modification Application to correct a confirmed error in the deck log coordinates.

## Access

The tool is located at the following link - [Blue Water Navy Data Modification Application](#). In order to get a user name or password for the application the user must contact the [PA&I Customer Portal](#).

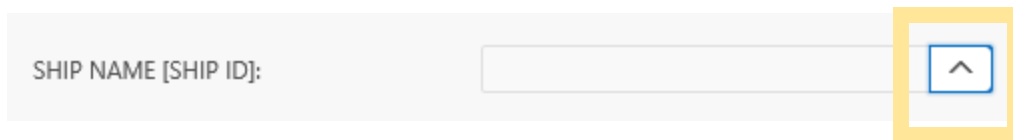
## Blue Water Navy Data Modification Application Landing Page

After accessing the tool, the user will be navigated to the landing page for the tool.

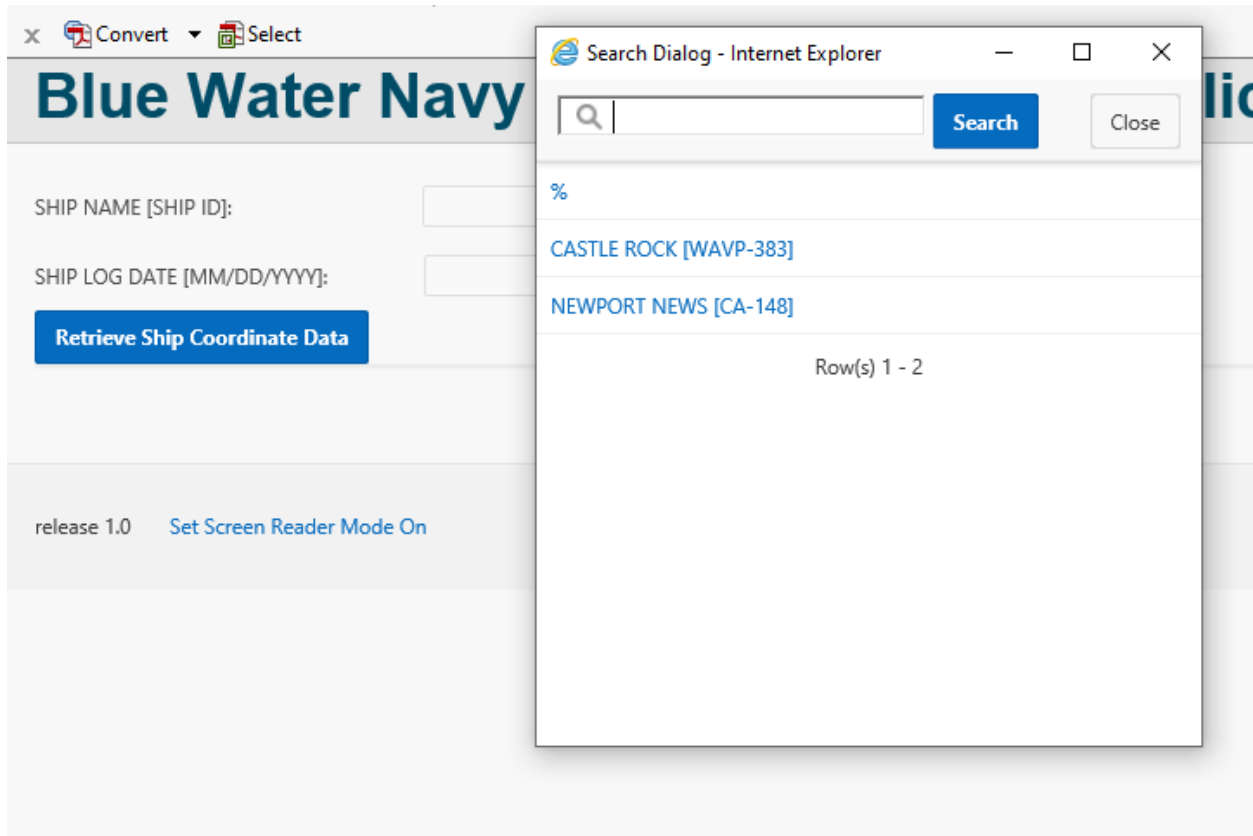


The two parameters the user will see on the landing screen are **Ship Name** and **Ship Log Date**.

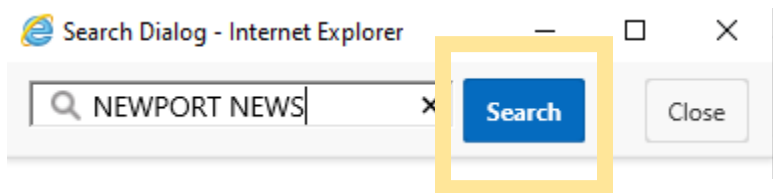
In order to modify a record, the user must first select a Ship Name from the Ship Name Parameter by selecting the down arrow next to the SHIP NAME [SHIP ID] Field.



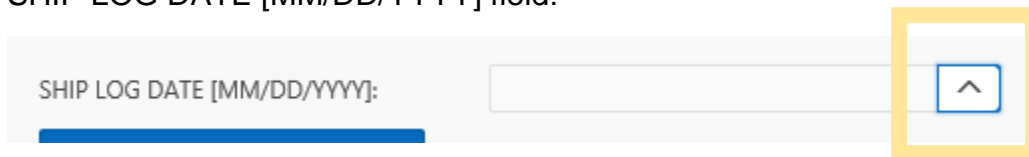
After selecting the drop-down arrow a dialogue box will appear containing a search function.



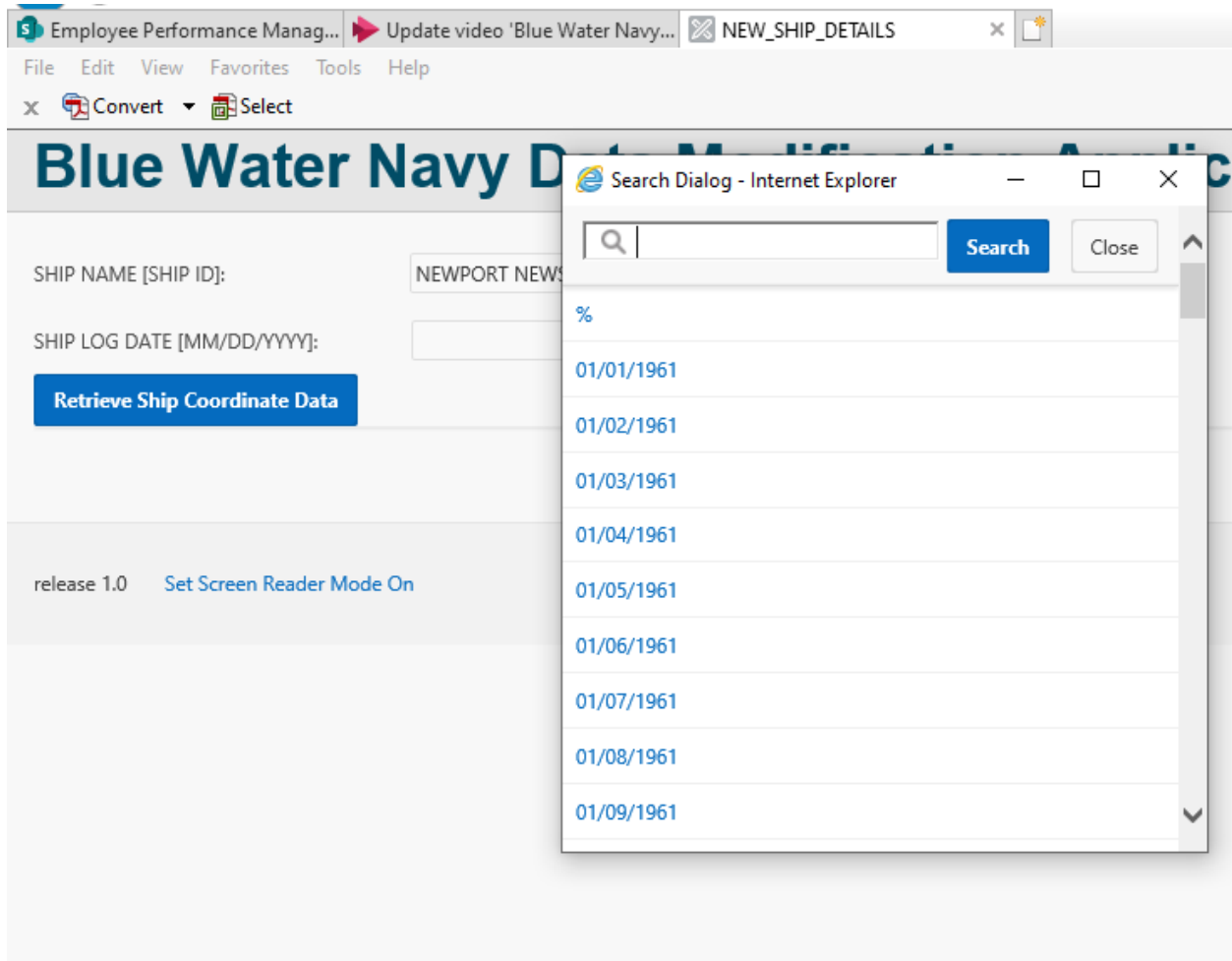
The user can then type in the Ship Name or Ship ID and select **Search**.



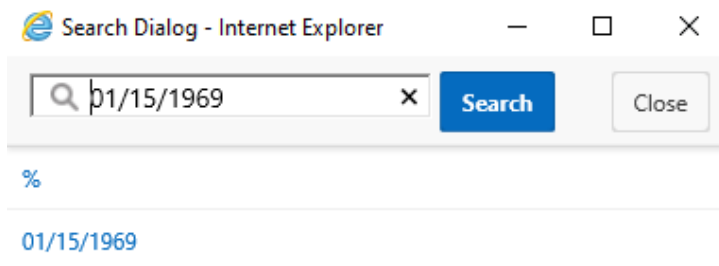
Next, the user must select a ship log date by selecting the drop-down arrow next to the SHIP LOG DATE [MM/DD/YYYY] field.



After selecting the drop-down arrow, a dialogue box will appear containing a search function.



The user can then type in the Ship Log Date value and select **Search**.



After the user has made their selections, they can select the option to **Retrieve Ship Coordinate Data**.

# Blue Water Navy Data Modification Application

SHIP NAME [SHIP ID]:

NEWPORT NEWS [CA-148]

SHIP LOG DATE [MM/DD/YYYY]:

01/15/1969

Retrieve Ship Coordinate Data

release 1.0 Set Screen Reader Mode On

Once the search has been executed, the user can review the results in the frame below parameter box. The user can see the coordinate information that is provided in the transcription record.

## Blue Water Navy Data Modification Application

Log Out

SHIP NAME [SHIP ID]:

NEWPORT NEWS [CA-148]

SHIP LOG DATE [MM/DD/YYYY]:

01/15/1969

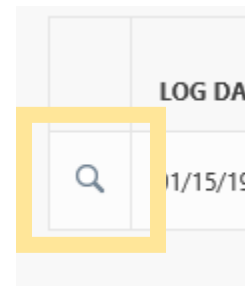
Retrieve Ship Coordinate Data

LOG DATE	SHIP NAME	SHIP ID	0800 LAT DEGREES	0800 LAT MINUTES	0800 LAT ZONE	0800 LONG DEGREES	0800 LONG MINUTES	0800 LONG ZONE	1200 LAT DEGREES	1200 LAT MINUTES	1200 LAT ZONE	1200 LONG DEGREES	1200 LONG MINUTES	1200 LONG ZONE	2000 LAT DEGREES	2000 LAT MINUTES	2000 LAT ZONE	2000 LONG DEGREES	2000 LONG MINUTES	2000 LONG ZONE
01/15/1969	NEWPORT NEWS	CA-148	16	54	N	107	20	E	16	54	N	107	15	E	16	53	N	107	21	E

1 - 1

After reviewing the coordinate information, if an edit is needed, the user can select the magnifying glass to the left of the record.

This opens the log date information, ship information and coordinate data.



## Blue Water Navy Data Modification Application

Log Out

SHIP INFO

LOG DATE: 01/15/1969

SHIP ID: CA-148

SHIP NAME: NEWPORT NEWS

Display Deck Log in Separate Window

Edit Coordinate Data

0800 LAT DEGREES 16 Points of Interest (0800)	0800 LAT MINUTES 54	0800 LAT ZONE N	0800 LONG DEGREES 107	0800 LONG MINUTES 20	0800 LONG ZONE E
1200 LAT DEGREES 16 Points of Interest (1200)	1200 LAT MINUTES 54	1200 LAT ZONE N	1200 LONG DEGREES 107	1200 LONG MINUTES 15	1200 LONG ZONE E
2000 LAT DEGREES 16 Points of Interest (2000)	2000 LAT MINUTES 53	2000 LAT ZONE N	2000 LONG DEGREES 107	2000 LONG MINUTES 21	2000 LONG ZONE E

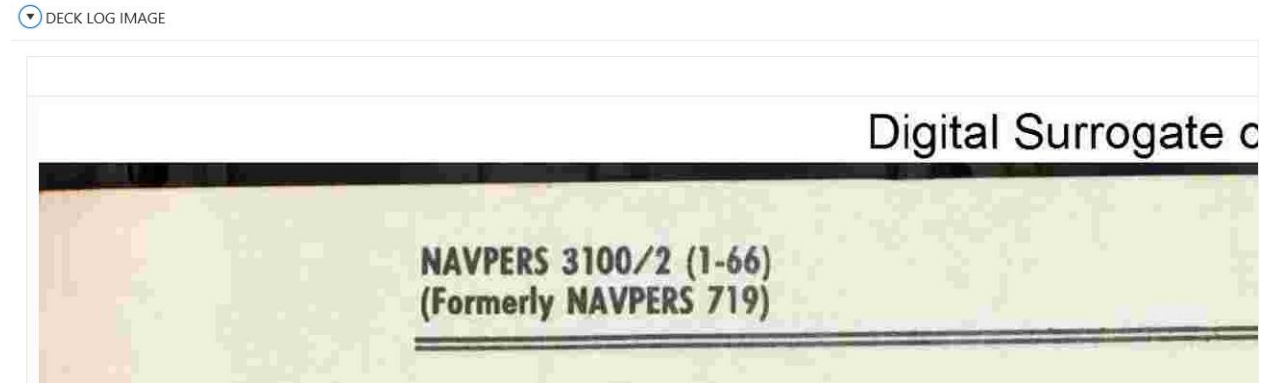
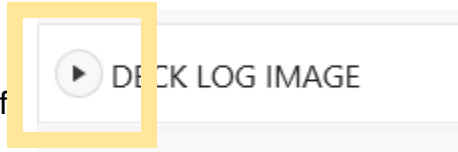
Comments for the changes

Cancel

Apply Changes

DECK LOG IMAGE

At the very bottom of the screen clicking the arrow next to DECK LOG IMAGE, will display an image of the original deck log below the DECK LOG IMAGE label.



If there is a need to view the deck log image in a larger format or compare the latitude and longitude coordinates, the user can click the **Display Deck log in Separate Window** option at the top right of the screen.



## Edit Coordinate Data

The Edit Coordinate Data Screen will allow you to modify the latitude and longitude coordinates in the event they were recorded incorrectly previously.

Edit Coordinate Data

	LATITUDE DEGREES	LATITUDE MINUTES	LATITUDE ZONE	LONGITUDE DEGREES	LONGITUDE MINUTES	LONGITUDE ZONE	
0800	<input type="text" value="16"/>	<input type="text" value="54"/>	<input type="text" value="N"/>	<input type="text" value="107"/>	<input type="text" value="20"/>	<input type="text" value="E"/>	<input type="button" value="Points of Interest (0800)"/>
1200	<input type="text" value="16"/>	<input type="text" value="54"/>	<input type="text" value="N"/>	<input type="text" value="107"/>	<input type="text" value="15"/>	<input type="text" value="E"/>	<input type="button" value="Points of Interest (1200)"/>
2000	<input type="text" value="16"/>	<input type="text" value="53"/>	<input type="text" value="N"/>	<input type="text" value="107"/>	<input type="text" value="21"/>	<input type="text" value="E"/>	<input type="button" value="Points of Interest (2000)"/>
0000	<input type="text" value="0"/>	<input type="text" value="0"/>	<input type="text" value="N"/>	<input type="text" value="0"/>	<input type="text" value="0"/>	<input type="text" value="E"/>	<input type="button" value="Points of Interest (0000)"/>
Supplemental	<input type="text" value="0"/>	<input type="text" value="0"/>	<input type="text" value="N"/>	<input type="text" value="0"/>	<input type="text" value="0"/>	<input type="text" value="E"/>	<input type="button" value="Test Coordinates"/>

Comments

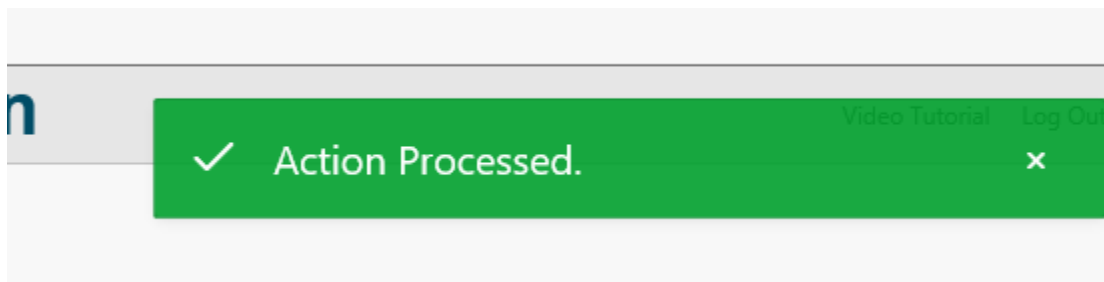
If a user needed to edit the Latitude Degrees or Latitude Minutes, they can do so on this screen by retyping the information in the appropriate boxes.

0800

LATITUDE DEGREES	LATITUDE MINUTES
<input type="text" value="16"/>	<input type="text" value="59"/>

When finished updating the record, press **Apply**. At that point the system will update the record.

If this update changes whether the ship falls in blue water, the revised coordinates will show with the blue background. After updating the record, the user will be routed back to the main landing page and see a green “Action Processed” pop up.



### Supplemental Data Fields

The Supplemental Data Fields can also be modified. The deck log narratives can include coordinates in addition to the coordinates noted at the top of the deck log. This modification tool allows a user to capture coordinates discussed within the deck log narrative in addition to the ones noted at the top of the deck log. This is captured in the Supplemental value area. The user can test these supplement values to see if it meets the blue water criteria.

Edit Coordinate Data

	LATITUDE DEGREES	LATITUDE MINUTES	LATITUDE ZONE	LONGITUDE DEGREES	LONGITUDE MINUTES	LONGITUDE ZONE	
0800	<input type="text" value="16"/>	<input type="text" value="54"/>	N	<input type="text" value="107"/>	<input type="text" value="20"/>	E	<a href="#">Points of Interest (0800)</a>
1200	<input type="text" value="16"/>	<input type="text" value="54"/>	N	<input type="text" value="107"/>	<input type="text" value="15"/>	E	<a href="#">Points of Interest (1200)</a>
2000	<input type="text" value="16"/>	<input type="text" value="53"/>	N	<input type="text" value="107"/>	<input type="text" value="21"/>	E	<a href="#">Points of Interest (2000)</a>
Supplemental	<input type="text" value="0"/>	<input type="text" value="0"/>	N	<input type="text" value="0"/>	<input type="text" value="0"/>	E	<a href="#">Test Coordinates</a>

Comments

[Cancel](#) [Apply Changes](#)

In order to test the coordinates, select the **Test Coordinates** blue button on the right-hand side.



A pop-up window titled, "Test Supplemental Coordinates Work Area" will open.

Test Supplemental Coordinates Work Area ✕

LAT DEGREES	LAT MINUTES	LAT ZONE	LONG DEGREES	LONG MINUTES	LONG ZONE	DISPOSITION
<input type="text"/>	<input type="text"/>	N ▾	<input type="text"/>	<input type="text"/>	E ▾	
<input type="text"/>	<input type="text"/>	N ▾	<input type="text"/>	<input type="text"/>	E ▾	
<input type="text"/>	<input type="text"/>	N ▾	<input type="text"/>	<input type="text"/>	E ▾	
<input type="text"/>	<input type="text"/>	N ▾	<input type="text"/>	<input type="text"/>	E ▾	
<input type="text"/>	<input type="text"/>	N ▾	<input type="text"/>	<input type="text"/>	E ▾	

Within this window the user can put up to five different supplemental coordinates, press **Populate Supplemental Coordinates** and the tool will evaluate and determine if they are in blue or brown water and note that in the Disposition column.

Test Supplemental Coordinates Work Area ✕

LAT DEGREES	LAT MINUTES	LAT ZONE	LONG DEGREES	LONG MINUTES	LONG ZONE	DISPOSITION
<input type="text" value="16"/>	<input type="text" value="0"/>	N ▾	<input type="text" value="108"/>	<input type="text" value="32"/>	E ▾	Blue Water
<input type="text" value="13"/>	<input type="text" value="43"/>	N ▾	<input type="text" value="108"/>	<input type="text" value="32"/>	E ▾	Brown Water
<input type="text" value="14"/>	<input type="text" value="0"/>	N ▾	<input type="text" value="105"/>	<input type="text" value="0"/>	E ▾	Neither
<input type="text"/>	<input type="text"/>	N ▾	<input type="text"/>	<input type="text"/>	E ▾	
<input type="text"/>	<input type="text"/>	N ▾	<input type="text"/>	<input type="text"/>	E ▾	

Note that this will only populate if the vessel was in blue or brown water.

SHIP INFO

LOG DATE: 01/15/1969      SHIP ID: CA-148      SHIP NAME: NEWPORT NEWS Display Deck Log in Separate Window

Edit Coordinate Data

	LATITUDE DEGREES	LATITUDE MINUTES	LATITUDE ZONE	LONGITUDE DEGREES	LONGITUDE MINUTES	LONGITUDE ZONE	
0000	<input type="text" value="16"/>	<input type="text" value="54"/>	N ▾	<input type="text" value="107"/>	<input type="text" value="36"/>	E ▾	<input type="button" value="Point of Interest (2000)"/>
1200	<input type="text" value="16"/>	<input type="text" value="54"/>	N ▾	<input type="text" value="107"/>	<input type="text" value="15"/>	E ▾	<input type="button" value="Point of Interest (1200)"/>
2000	<input type="text" value="16"/>	<input type="text" value="53"/>	N ▾	<input type="text" value="107"/>	<input type="text" value="21"/>	E ▾	<input type="button" value="Point of Interest (2000)"/>
0000	<input type="text" value="0"/>	<input type="text" value="0"/>	N ▾	<input type="text" value="0"/>	<input type="text" value="0"/>	E ▾	<input type="button" value="Point of Interest (0000)"/>
Supplemental	<input type="text" value="13"/>	<input type="text" value="40"/>	N ▾	<input type="text" value="108"/>	<input type="text" value="32"/>	E ▾	<input type="button" value="Test Coordinates"/>

Comments:

When the user has made all adjustments / modifications, select **Apply Change** which will update the new coordinates in the Blue Water Navy Ship Locator.

## Questions

If you have any questions regarding the tool, this Fact Sheet or the associated video please contact Performance Analysis and Integrity at the [PAI Customer Portal](#).